



1.8° Nema 17, Size 42mm High Torque Hybrid Stepping Motor

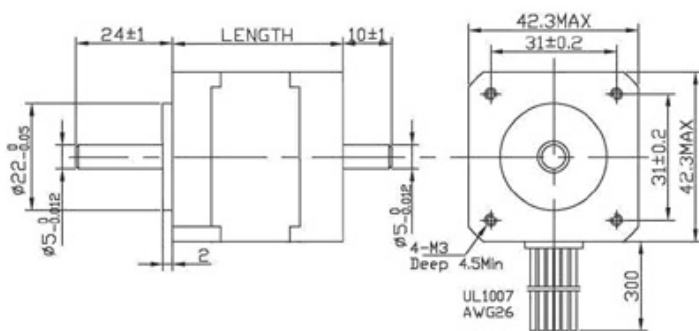
Technique Parameter

Item	Specification
Step Angle Accuracy	±5% (full step,no load)
Resistance Accuracy	±10%
Inductance Accuracy	±20%
Temperature Rise	80 Max.(rated current,2 phase on)
Ambient Temperature	-10 -+50
Insulation Resistance	100MΩMin.500VDC
Dielectric Strength	500VAC for one minute
Shaft Radial Play	0.06Max.(450 g-load)
Shaft Axial Play	0.08Max.(450 g-load)

Technique Specification

Model No.		Rated Voltage	Current /Phase	Resistance /Phase	Inductance /Phase	Holding Torque		#Of Leads	Rotor Inertia	Weight	Length
Single Shaft	Double Shaft	V	A	Ω	mH	Oz	ing-cm		g-cm2	Kg	mm
SM42HT33-0956A	SM42HT33-0956B	4	0.95	4.2	2.5						
SM42HT33-0406A	SM42HT33-0406B	9.6	0.4	24	15	22	1580	6	35	0.22	33
SM42HT33-0316A	SM42HT33-0316B	12	0.31	38.5	21						
SM42HT33-1334A	SM42HT33-1334B	2.8	1.33	2.1	2.5	30	2200	4			
SM42HT38-1206A	SM42HT38-1206B	4	1.2	3.3	3.2						
SM42HT38-0806A	SM42HT38-0806B	6	0.8	7.5	6.7	36	2590	6	54	0.28	38
SM42HT38-0406A	SM42HT38-0406B	12	0.4	30	30						
SM42HT38-1684A	SM42HT38-1684B	2.8	1.68	1.65	3.2	50	3600	4			
SM42HT47-1206A	SM42HT47-1206B	4	1.2	3.3	2.8						
SM42HT47-0806A	SM42HT47-0806B	6	0.8	7.5	6.3	44	3170	6	68	0.35	47
SM42HT47-0406A	SM42HT47-0406B	12	0.4	30	25						
SM42HT47-1684A	SM42HT47-1684B	2.8	1.68	1.65	2.8	62	4400	4			

Dimensions



Wiring Diagram

